

# GLASS CUTTERS

## MICRO FINISH STEEL WHEEL – BRONZE AXLES BALL TAPPING HANDLE

Catalog #	Color Code	Hone Angle
02	All Green	120°
07	Blue Band	114°

*Cutting Purpose*  
General cutting of sheet glass.  
Opalescent and hard glass.



## CARBIDE WHEEL “GOLD TIP” GLASS CUTTERS UNUSUAL LASTING QUALITY (Silver Band)

Catalog # CA9

This cutter has the exceptionally high quality inherent in all Fletcher tools. The CA9 has a carbide wheel for longer lasting and sharper cutting.



## RESERVOIR OIL CUTTER FOR PATTERN CUTTING

Catalog # SC-1

This cutter features a refillable oil reservoir in the handle which releases a small amount of oil to the cutter wheel when handle is depressed. Carbide wheels outlast conventional cutters by far.



**TOYO**

## REPLACEMENT HEAD

Catalog # SC-1A or SC-1A-T (Tap Wheel)

## RESERVOIR OIL CUTTER FOR PRODUCTION CUTTING METAL HANDLE

Catalog # SC-2

Same as SC-1, but with a large head for production cutting.



**TOYO**

## REPLACEMENT HEAD

Catalog # SC-2A

## REPLACEMENT HEAD FOR PLATE AND THICK GLASS

Catalog # SC-3A

## RESERVOIR OIL CUTTER FOR PRODUCTION CUTTING PLASTIC HANDLE

Catalog # SC-3

Same as above, but with a plastic handle.



**TOYO**

## REPLACEMENT HEAD

Catalog # SC-1A or SC-1A-T (Tap Wheel)

**CUSTOM GRIP SUPERCUTTER**

*Catalog # SC-5C*



This cutter features a custom grip and a refillable oil reservoir in the handle. Neon colored handles are sent at random. Color cannot be specified.

**TOYO**

**REPLACEMENT HEAD FOR SC-5C SUPERCUTTER ONLY**

*Catalog # SC-5A*

**RESERVOIR OIL CUTTER**

*Catalog # SC-6C*



The oil "HAND" cutter was designed for easy grip. This cutter is excellent for production cutting and also gives great leverage for pattern cutting. The "HAND" cutter has an extra large oil reservoir and is lightweight. Neon colored handles are sent by random, color can not be specified.

**TOYO**

**REPLACEMENT HEAD**

*Catalog # SC-1A or SC-1A-T (Tap Wheel)*

**NEON COLORED OIL CUTTER WITH COMFORT GRIP**

*Catalog # SC-7C*



This "Supercutter" has a newly shaped handle to fit comfortably in your hand. Standard blades are replaceable and has a neon colored transparent handle which allows users to check oil levels by sight. Neon colored handles are sent by random, color can not be specified.

**TOYO**

**REPLACEMENT HEAD**

*Catalog # SC-1A or SC-1A-T (Tap Wheel)*

**THOMAS GRIP CUTTER**

*Catalog # SC-8C*



This cutter rests between the index and middle finger to give sure control for precision pattern cutting. Body rotates 360° around finger grip. Neon colored handles are sent by random. Color can not be specified.

**TOYO**

**REPLACEMENT HEAD**

*Catalog # SC-1A or SC-1A-T (Tap Wheel)*

**DIAMANTOR IMPORTED GLASS CUTTER**

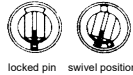
*Catalog # 200*

The unique handle has a "safe-grip" finger notch and a comfortable, well balanced feel. Made in Germany.



**SCOREMASTER I SYSTEM—SOLID HANDLE**

*Catalog # SCM-1*

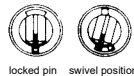


The Scoremaster I System features a comfort contoured handle and universal grip that cuts glass in a pull or push stroke. It does not have an oil reservoir. All three heads are completely interchangeable (snap-out) with tungsten carbide wheels. The Scoremaster I comes with a 140° small wheel size for general purpose work, and can be set for swivel position cutting or fixed (locked pin) position. The head wheel slot and axle are hardened steel to prevent wear and accurately guide the cutting wheel.



**SCOREMASTER II SYSTEM—OIL RESERVOIR**

*Catalog # SCM-2*



The Scoremaster II System features an oil reservoir and flow valve system that resists leaking, as well as a contoured comfort handle and universal grip for push or pull cutting. All three heads are completely interchangeable (snap-out) and come with tungsten carbide wheels. The Scoremaster II comes with a 140° small wheel size for general purpose glass work, and can be set for swivel position cutting or fixed (locked pin) position cutting. The head, wheel slot and axle are hardened steel to prevent wear and accurately guide the cutting wheel.



**REPLACEMENT HEADS FOR FLETCHER SCOREMASTER CUTTERS.**

- Catalog # SCM-701*      140° small wheel for general purpose glass work.
- Catalog # SCM-703*      114° medium wheel for hard thin glass.
- Catalog # SCM-706*      140° wide head, medium wheel for straight-edge work.
- Catalog # FT-720*      0 rings ( Pkg. of ten )



**DESIGNER II CUTTERS**

- Catalog # FT-711* **CLEAR PLASTIC PENCIL GRIP**
- Catalog # FT-713* **SOLID BRASS PENCIL GRIP**
- Catalog # FT-714* **CLEAR PLASTIC PISTOL GRIP**



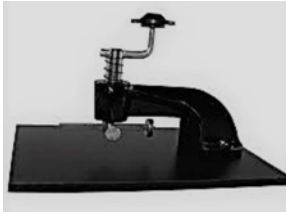
Designer II glass cutters feature the innovative Fiberlock, anti-leak, fluid dispensing valve system that lays down a perfect bead of cutting fluid along the score. Available in three styles, all Designer II glass cutters come with 140 degree long-life tungsten carbide cutting wheels and the option for fixed or swivel head cutting. Interchangeable wide and narrow heads for straight line or pattern cutting available. The solid brass and plastic contoured handle pencil grip cutters each include a tapping ball for easy break-out of glass.

- Catalog # FT-03-711*      **WIDE REPLACEMENT HEAD 140°**
- Catalog # FT-03-712*      **NARROW REPLACEMENT HEAD 140°**
- Catalog # FT-03-713*      **WIDE REPLACEMENT HEAD 154° (PLATE GLASS)**



### SMALL LENS CUTTER

Catalog # 32



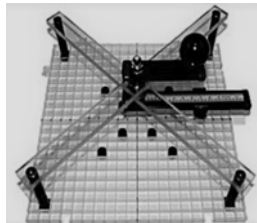
It will cut circles as small as 1/2" diameter and as large as 5" diameter. A graduated rod makes it a simple matter to quickly adjust the cutter for any size circle within the limits of the machine. A turret containing three wheels makes wheel changing simple. When necessary the entire unit can be replaced in a matter of seconds. The overall size is 8" long, 6" wide and 5" high.

Catalog # 3T **REPLACEMENT 3-WHEEL TURRET**



### CIRCLE-PRO 12

Catalog # CSG-CP12



This unique circle cutter can cut circles from 3/8" up to 12". It utilizes the Toyo cutting head, so you know you will be getting the best score possible each time. It is packed with 1- 12" x 12" waffle grid that the apparatus plugs into. It will also fit into the Morton System grid surface. Also packed with 8 friction buttons to keep your glass in place while you cut.

Catalog # SC-1A **REPLACEMENT HEAD**

**CUTTER'S MATE (Shown)** This is Cuter's Mate most portable model, Arm length: 16" Longest straight cut: 42.5".  
Catalog # CSG-1

**CUTTER'S MATE PLUS** Very portable with more cutting area and stability than the smaller Cutter's Mate model. Arm Length: 21" Longest straight cut: 61.5"  
Catalog # CSG-2

**CUTTER'S MATE COMMERCIAL** Cutter's Mate premium model--handles all cutting needs, great or small. Arm length 30" Longest straight cut: 94.5".  
Catalog # CSG-3



Ideal for taking on the road. Cutter's mate glides effortlessly across the glass while maintaining a constant 90-degree angle to the surface. You will experience greater comfort and ease in scoring glass. The cutting head can be rotated a full 360 degrees, giving you the ability to cut any shape you can draw or trace. You can even score glass while sitting down. With Cutter's Mate, you can cut glass longer with less fatigue and greater comfort.

### STRIPPER AND CIRCLE CUTTER

Catalog # 3016



This is a unique combination tool designed specifically for stained glass. The stripper can cut glass into squares, rectangles and diamonds from 1/2" to 12" wide. The circle cutter attachment can cut circles from 3" to 24" in diameter. The "Stripper and Circle Cutter" is great for border pieces and production cutting. This combination tool contains three pieces: T-bar with a 6-wheel cutter turret and a 12" scale, circle cutter base, and a stripper base. The T-bar attaches to either base.

Catalog # 3016A **REPLACEMENT 6-WHEEL TURRET**



**CIRCLE MATE II CIRCLE AND STRIP CUTTER**

Catalog # CM-2



This circle cutter has a vacuum suction cup to hold center positioned. Comes with arm to do 24" maximum circles, circle cutting base and strip cutting base and a 3-wheel turret. Extension arms to cut up to 48" or 72" circles may be purchased separately.

- Catalog # CM-2A **REPLACEMENT 3-WHEEL TURRET**
- Catalog # CM-2B **REPLACEMENT CARBIDE WHEEL**
- Catalog # CM-2-48 **EXTENSION ARM FOR 48" CIRCLES**
- Catalog # CM-2-72 **EXTENSION ARM FOR 72" CIRCLES**
- Catalog # FT-02-614 **REPLACEMENT 6-WHEEL TURRET**



Catalog # FT-05-221 **CIRCLE OVAL CUTTER**



The Fletcher Oval/Circle Glass Cutter will score circle from 4-1/4 to 21-1/2 inches wide, ( 108mm to 546mm ). In addition, it will score ovals up to 3", ( 75mm ), longer than their width. The largest oval is 21-1/2" wide by 24-1/2 inches long, (546mm by 622mm ).

Catalog # FT-03-131 **REPLACEMENT HEAD**



# BREAKING/RUNNING PLIERS

Catalog # 4112-DRA **BREAKER-GROZIER COMBINATION PLIER**

A 6" curved jaw plier for breaking and grozing. Comes with rubber coated handle.



Catalog # 4114-DRA **GLASS BREAKING PLIER**

A 6 1/2" breaking plier; the jaws are smooth and have rubberized handles for comfort.



Catalog # 4121-DRA **CUT-RUNNING PLIER, METAL**

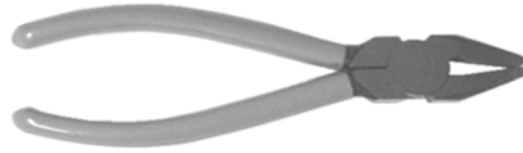
Adjustable, curved jawed, cut-running pliers for running a score. The adjustment feature allows for precise setting of jaw closure height.



Catalog # 4121JI-DRA **REPLACEMENT TIP COVERS**

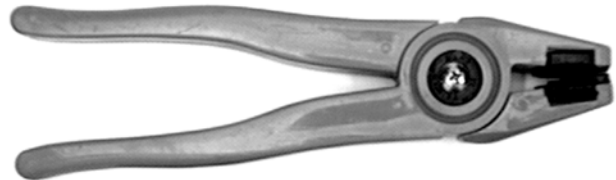
*Catalog # 4116-PRO*      **'FISHLIPS' GROZING PLIER**

An efficient new concept in grozing pliers. Able to groze more complex inside curves easier and faster than conventional groziers.



*Catalog # 4110-PRO*      **PLASTIC RUNNING PLIER**

Light weight ABS plastic running plier. Similar to # 189 Fletcher plier. Comes complete with extra set of jaws.



**9" HEAVY DUTY BREAKER**

*Catalog # 4210-PRO*

A heavy duty 9" drop jaw breaker plier. 7/8" jaw width. Made in Taiwan for Leponitt.



**BREAKING-GROZING PLIER**

*Catalog # FO-5*

A 6" curved jaw glass breaking-grozing plier with a 3/8" jaw width and plastic covered comfort handles. (Spring loaded.) Exceptionally high quality .



**6" RUNNING PLIER**

*Catalog # 169*

**8" RUNNING PLIER**

*Catalog # 189*

Fletcher plastic cut-running pliers are lightweight, of rugged construction, comfortable, and like all Fletcher products, of top professional quality.



*Catalog # 186JI*      **REPLACEMENT JAW INSERTS FOR 169 PLIER**

*Catalog # 189JI*      **REPLACEMENT JAW INSERTS FOR 189 PLIER**



### RINGSTAR GLASS BREAKING PLIER

Catalog # GRS

A unique running plier with a patented pressure system designed specifically for curves. Based on a ring design, a window allows the user to accurately position the plier over the score to run in any direction. The long flexible handles make it effortless to start a run and easy control it accurately.



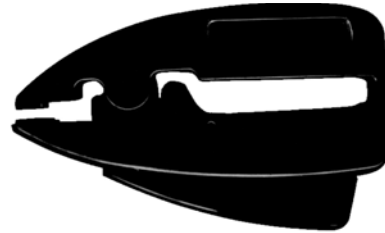
Catalog # GRS-JI

REPLACEMENT JAW INSERTS

### GLASS SNAPPER

Catalog # GS-1

Easy to hold spring loaded breaking plier, this means no fumbling. For use with glass up to 5/32" (4mm).



## MOSAIC CUTTERS

### MOSAIC CUTTER

Catalog # 4117-Pro

This quality tool is designed to easily cut glass without the use of a traditional glass cutter. Good at quickly cutting small pieces of glass and at removing small points from a piece of glass. Made in Taiwan for Leponitt.



Catalog # 4117JI

REPLACEMENT CUTTING WHEELS



## LEAD DIKES

### ADJUSTABLE LEAD DIKE

Catalog # FO-7

A 6" adjustable lead dike with plastic covered comfort handles. The adjustable capability allows for extended blade life. These excellent cutters are also spring loaded for ease of use.



### LEAD CAME CUTTER 6"

Catalog # 4120-CA

This lead dike is spring loaded. Comes with rubber coated handles.



# LEAD KNIVES

**LEAD KNIFE**  
Catalog # 4003-PRO

Single edged lead cutting tool



# PATTERN SHEARS

**"FAN OUT" PATTERN SHEARS**  
Catalog # 4007-FO-F For Foil  
Catalog # 4007-FO-L For Lead



"Fan Out" pattern shears are absolutely the finest shears to enter the stained glass market to date. They offer high quality stainless steel blades. The handles are durable resin contoured to guarantee comfort during many hours of pattern cutting.



**MIKA COMBINATION PATTERN SHEARS**  
Catalog # 4007-M



This "Two In One" pattern shear features interchangeable super sharp stainless steel lead and foil blades which are easily exchanged with a simple twist of the unique locking device.



**MIKA PATTERN SHEARS**  
Catalog # 4007-MF For Foil  
Catalog # 4007-ML For Lead



This pattern shear features sharp stainless steel blades with ambidextrous color coded handles. White for Foil, Red for Lead and Green for Mosaic. Patented "over-ride" insures that cuts can be made to the tip, with ejection of waist from between the blades.



# SOLDERING IRONS

**MIKA 100 WATT**  
120V., U.L. Listed  
Catalog # M-100

A good quality iron at a great price, this iron is perfect for beginners and hobbyists. Works best when paired with a temperature controller. Comes equipped with a 1/4" tip, and features a long, comfort-grip handle. One year manufacturer warranty.

**MIKA 80 WATT**  
120V., U.L. Listed  
Catalog # M-80



## REPLACEMENT TIPS FOR M-80 & M-100

Catalog # MSIT203 1/4" CHISEL TIP  
Catalog # MSIT204 3/8" CHISEL TIP  
Catalog # MSIT205 1/16" CHISEL TIP

**LEPONITT 100 WATT**  
120V., U.L. Listed  
Catalog # 41100

This iron is a great value. The wooden handle is comfortable, cool and helps balance the iron while in use. Uses 3/8" diameter tips.

## REPLACEMENT TIP

Catalog # 4101 3/8" Chisel Tip





# AMERICAN HAKKO SOLDERING IRONS

## 60 WATT SOLDERING IRON 120 V.

Catalog # AH-60



### HAKKO REPLACEMENT PARTS FOR AH-60

Catalog # AH-60A     3/16" REPLACEMENT TIP



The "Red" was specially designed for the new hobbyist. It is 9 1/2" long and extremely lightweight. Features a plastic handle that remains cool while working. The iron includes a 3/16" chisel tip that is able to maintain excellent heat. This 60 watt iron is ideal for kits. Use with stand AH-602.

## 67 watt Temperature controlled Iron 120 V., 1000°, U.L. Listed

Catalog # AH-FX601



### HAKKO REPLACEMENT TIPS FOR AH-FX601

Catalog # AH-T19D5     3/16" CHISEL TIP  
Catalog # AH-T19D65     1/4" CHISEL TIP



The AH-FX601 iron has a reostat on the handle which allows you to set the perfect temperature for the work you are doing and has a maximum temperature of 1004°F. The ceramic heating element enables it to heat very quickly and maintain an even heat as you work. It is packed with a 3/16" tip and has an optional 1/4" tip available.

## 150 WATT 120V., U.L. Listed Catalog # AH-150



### HAKKO REPLACEMENT TIPS FOR AH-150

Catalog # AH-CA127     1/2" Diameter Pointed Tip



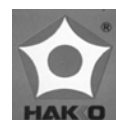
This is a large heavy duty iron with the power switch built right into the iron handle. Designed for large, high mass objects.

## 200 WATT 120V., U.L. Listed Catalog # AH-200



### HAKKO REPLACEMENT TIPS FOR AH-200

Catalog # AH-CA16     5/8" Diameter Pointed Tip



This is a large heavy duty iron with the power switch built right into the iron handle. Designed for large, high mass objects.

# AMERICAN HAKKO IRON TIPS

## HAKKO REPLACEMENT TIPS FOR AH-456

Catalog # AH-1026      3/16" CHISEL TIP  
 Catalog # AH-1179      3/8" CHISEL TIP



## HAKKO REPLACEMENT TIPS FOR AH-918

Catalog # AH-918-1      1/16"      MINI CHISEL  
 Catalog # AH-918-2      3/32"      STANDARD CHISEL  
 Catalog # AH-918-3      1/8"      LARGE CHISEL  
 Catalog # AH-918-6      1/4"      LARGE CHISEL  
 Catalog # AH-918-B                      CONICAL

# AMERICAN HAKKO ACCESSORIES

## HAKKO SOLDERING IRON STAND WITH TIP CLEANER

Catalog # AH-633



Hakko's soldering iron stand is made of metal with a high-temperature plastic holding sleeve. This stand comes with The AH-599 tip cleaner. For use with AH-456.

## HAKKO SOLDERING IRON STAND

Catalog # AH-602

## REPLACEMENT SPONGE

Catalog # AH-602RS



The Iron holder 602 is designed so that the iron can be quickly, easily and safely set down. The stand is simple to assemble and disassemble for storage.



## TIP CLEANER TRAY

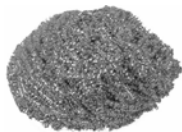
Catalog # AH-599



Hakko's soldering iron tip cleaner tray has a brass wire which cleans tip better than standard sponge trays.

## TIP CLEANER REPLACEMENT WIRE for #AH-633 and #AH-599

Catalog # AH-599RS



The Hakko 599 tip cleaner uses fine metal coils to clean the tip. The 599 removes oxides and other contaminants without damaging the long life tip plating.



## HAKKO STUDENT IRON STAND

Catalog # AH-603



This stand is specifically designed for the student series irons, AH-80, & AH-100. The base is made of diecast metal with a stainless steel holding piece, sponge is included.



# WELLER IRONS

## 80 WATT SOLDERING IRON

120 V., U.L. Listed

Catalog # WLC200



The Weller® WLC200 120 volt soldering station offers adjustable tip temperature by varying the heater wattage. By turning the knob on the power base the wattage can be varied from a minimum of 5 watts to a maximum of 80 watts. The WLC200 comes with a built in iron stand, a tip cleaning sponge, a flat blade set screw, an Allen set screw, and is supplied with a MTG-20 3/8" chisel tip.

Weller®

## 80 WATT (LIGHTED) SOLDERING IRON

120 V., U.L. Listed

Catalog # SPG-80L



The Weller SPG-80L is specifically designed for stained glass work. This medium duty 80-watt soldering iron has been introduced by Weller for the growing stained glass art and craft market. It comes complete with the new, long-life iron plated tips and a soldering iron stand. The new SPG80 with 1/4" and 3/8" chisel-shaped tips develops 950° F. tip temperature for precision soldering of the most intricate work. It measures 9 1/4", weighs 7 ozs, and features a heat and impact resistant handle. For best results use #PH100 stand.

Weller®

### WELLER REPLACEMENT TIPS FOR SPG-80L & WLC200

Catalog # MTG-20      3/8" CHISEL TIP  
 Catalog # MTG-21      1/4" CHISEL TIP  
 Catalog # MTG-22      GROOVED BEADING TIP

### PLATO REPLACEMENT TIPS FOR SPG-80L & WLC200

Catalog # 64-1059      1/4" CHISEL TIP  
 Catalog # 66-1290      3/8" CHISEL TIP

## 100 WATT CONTROLLED OUTPUT SOLDERING IRON

120V. 50/60 Hz., 700° , U.L. Listed

Catalog # W-100



8 1/2" long. Weight 8oz. Comes with 3/8" 700° F. Chisel tip. A high quality tool with all the benefits of controlled output and temperature. Temperature selection by merely changing tips. Use with #PH100 stand.

Weller®

### WELLER REPLACEMENT TIPS FOR W-100

Catalog # CT6C7      1/8" CHISEL TIP 700°  
 Catalog # CT6D7      3/16" CHISEL TIP 700°  
 Catalog # CT6E7      1/4" CHISEL TIP 700°  
 Catalog # CT6F7      3/8" CHISEL TIP 700° (standard)  
 Catalog # CT6G7      BEADING TIP 700°  
 Catalog # CT6D8      3/16" CHISEL TIP 800°  
 Catalog # CT6F8      3/8" CHISEL TIP 800°

### PLATO REPLACEMENT TIPS FOR W-100

Catalog # 6C-3219-7      1/8" CHISEL TIP 700°  
 Catalog # 6C-1083-8      3/8" CHISEL TIP 800°  
 Catalog # 6C-1083-7      3/8" CHISEL TIP 700°  
 Catalog # 6C-0362-7      BEADING TIP 700°

### WELLER REPLACEMENT PARTS FOR W-100

Catalog # HEW100P      HEATING ELEMENT  
 Catalog # KN100A      KNURLED RING NUT  
 Catalog # SW100      SWITCH

Weller®

# WELLER IRONS

**120 WATT HEAVY DUTY SOLDERING IRON**  
120 V., 950°, U.L. Listed  
Catalog # SP-120



Heavy Duty iron for greater output. It is 11 3/8" long. Weights 10 oz. 1/2" diameter tip.

Weller®

Catalog # MTG-30

**WELLER REPLACEMENT TIP FOR SP-120**

**WELLER SOLID STATE SOLDERING GUN**  
120 V., 150 Watt, 700°, U.L. Listed  
Catalog # GT-7A



Fast heat, small tip useful for copper foil work, tack soldering, etc. Has quick-release interchangeable powerhead 3/16" chisel tip.

Weller®

**WELLER SOLID STATE SMOKE ABSORBER**  
Catalog # WSA350

Catalog # WSA350R

**FILTERS 5-PACK**



This smoke absorber is designed to remove noxious gasses, safely, quickly and efficiently with a low noise high performance fan. The filter is made by joining specific urethane foam with refined activated carbon having a high absorbing performance.

Weller®

Catalog # 7A

**REPLACEMENT HEAD FOR GT-7A**

# WELLER KITS

Are easy and comfortable to use due to balanced design, lightweight construction and maximum heat protection.

Are economical and durable due to the replaceable modular design.

Have rapid heat recovery for continuous operation.

Are safe to use. U.L. Listed.

**BASIC SOLDERING KIT**  
Catalog # 1140A



Weller®

1140A includes the 7760 red handle and the 4033S 1000° F interchangeable heater with integral iron clad, silver plated, long taper chisel shaped tip.

**CUSTOM SOLDERING KIT**  
Catalog # 1175



Weller®

1175 includes the 7760 red handle, the 37 1100° F interchangeable heater and PL-133 replaceable iron clad, silver plated, long taper chisel shaped tip.

# WELLER MODULAR PARTS

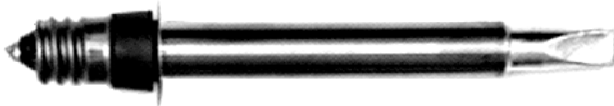
## HANDLE & CORD *Catalog # 7770*



Turquoise colored convection-cooled molded grip. Stainless steel heat reflector. Flexible 2-wire cord. Provides complete interchangeability of all standard line heaters and integral heater/tips. Grip diameter 1", handle length 5". For best results use the #8800 Iron Holder.

**Weller®**

## 45 WATT MODULAR HEATER *Catalog # 4033S*



Constructed of rugged corrosion resistant stainless steel, featuring high strength resistance and providing positive heat transfer to the tip. Wedge shaped base guide permits firm taper-fit assembly to the handle.

**Weller®**

## 45 WATT MODULAR THREADED HEATER *Catalog # 4037S*



The same performance as the 4033S, but allows you to use interchangeable thread-on tips. (No tip included).

**Weller®**

## 50 WATT HIGH-PERFORMANCE HEATER *Catalog # 33*



1100° F heater with integral ironclad, silver-plated, long taper chisel tip.

**Weller®**

## 50 WATT HIGH-PERFORMANCE THREADED HEATER *Catalog # 37*



The same high performance as the # 33, but allows you to use interchangeable thread-on tips. (No tip included).

**Weller®**

Catalog # *PL-113* **THREAD-ON TIP**

1/8" standard chisel tip for use on either the 4037S or 37 heaters.



**Weller®**

Catalog # *PL-151* **THREAD-ON TIP**

1/8" taper chisel tip for use on either the 4037S or 37 heaters.



**Weller®**

Catalog # *PL-133* **THREAD-ON TIP**

3/16" chisel tip for use on either the 4037S or 37 heaters.



**Weller®**

Catalog # *PL-153* **THREAD-ON TIP**

3/16" chisel tip for use on either the 4037S or 37 heaters.



**Weller®**

Catalog # *PL-350* **THREAD-ON TIP**

3/8" chisel tip for use on either the 4037S or 37 heaters.



**Weller®**

## **SOLDERING ACCESSORIES**

Catalog # *T-100* **KLEEN-TIP SPONGE & TRAY**

Tray fastens securely to workbench. Includes specially processed sponge for tip cleaning. Removes oxidation. Helps to prevent contamination.



Catalog # *T-100RS* **REPLACEMENT SPONGE**



# SOLDERING ACCESSORIES

Catalog # PH100 SOLDERING IRON STAND



Specifically designed to extend life of Weller controlled output tools. PH stands have heavy non-sliding cast bases with sponge receptacle and conveniently positioned non-sinking spring stand and funnel. Soldering Tool Stand, with sponge. For W100 and SPG-80L irons.

**Weller®**

Catalog # RS1 REPLACEMENT SPONGE

Catalog # 4129-PRO SOLDERING IRON STAND

Similar to stand above. Imported for use with SPG-80L and W-100.



Catalog # 4129A REPLACEMENT SPONGE

Catalog # 8000 SOLDERING IRON HOLDER

This handy holder attaches easily to any work area for operator safety, convenience and to prevent damage to the soldering irons. Designed for Ungar modular soldering irons.



**Weller®**

Catalog # GSC-1 SOLDERING IRON CONTROL



Featuring a one full year warranty, "ON" indicator light and a rating of 15 amps or 1800 watts. Uses no fuses, Useful for controlling the temperature of an iron to suit various soldering conditions. Now with grounded plugs.

**GlactaR**

Catalog # PSC-1 LEPONITT SOLDERING IRON CONTROL



