

# MICROWAVE KILNS

## MICROWAVE KILNS

Catalog # MK-S

Catalog # MK-M

Small 3" I.D.

Medium 4 1/2" I.D.

An excellent kiln for jewelry pieces or just for testing compatability. The smaller size fires glass in about 5 minutes while the larger size takes about 8-10 minutes. Requires shelf paper to prevent glass from sticking to kiln.



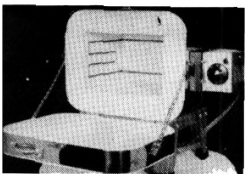
# EVENHEAT 110v KILNS

## KILN PRICING FOB CASEVILLE, MI

### COPPER KILN

Catalog # EH-JC

Catalog # EH-JC-STP



An excellent kiln for testing, teaching and beginners. The front loading design makes raking and manipulation easy. Infinite switch control is standard. Operates on 120V, 12 amps. Inside dimensions are 10" wide x 6 1/2" long x 9" deep. Also available with STP computer controller.

### STUDIO 8 KILN

Catalog # EH-ST8 (120 volt 12 amps)



The Studio 8 is a 3 piece lift-off design that allows you to lift the lid and the firing chamber from the floor of the kiln . It has an infinite heat control switch and analog thermomiter. The firing chamber is 8"W x 8"L x 4 1/2"D. There is a viewing window in the lid. Great for small projects, jewelry and compatability testing.

# EVENHEAT 110v GLASS KILNS

## KILN PRICING FOB CASEVILLE, MI

### STUDIO PRO KILN

Catalog # EH-SP (120 volt 12 amps)

Catalog # EH-SP-SP with Set Pro Controller.



The STUDIO PRO kiln is the same as the STUDIO-8 kiln Except the lid is hinged to the main firing chamber, and the firing chamber is hinged to the base, this allows you to load the kiln without having the chamber walls in the way. It also allows you to open the top easily for venting. The firing chamber measures 8 x 8 x 4 1/2" and it has a viewing window in the top. Analog pyrometer is included.

### STUDIO Pro 14 KILN

Catalog # EH-SP14RM (120 volt 15 mps)



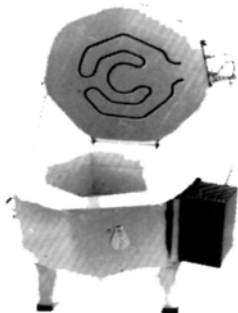
The STUDIO PRO 14's Dual hinge design offers unlimited access to your art. The lid flips up allowing access for manipulation glass during firing as well as venting in the cooling process. The front loading option makes it easy to load and unload finished work. Firing chamber measures 14 1/2" x 14 1/2" x 6 1/2" deep. and is equipped with the set-pro controller.

### HOT SHOT KILN

Catalog # EH-GT14-6

Catalog # EH-GT14-6RM ( with built-in-rampmaster)

Catalog #EH-HS Hot Shot (w/ STP controller)



The GT 14-6 & HOT SHOT kiln combines the space and performance of a large kiln with the convenience of 120 volt 15 amp operation. This hot little unit is very capable and offers the user complete flexibility. Heating elements are configured in a top firing design with infinite control switch standard. A wonderful kiln for the serious beginner. Inside dimensions are 14 1/2" wide x 6 1/2" deep.

# EVENHEAT 220v GLASS KILNS

## KILN PRICING FOB CASEVILLE, MI

### RECTANGULAR KILN

Catalog # EH-GT4050 (With built-in STP controller)



The GT4050 is favored for its ability to reach temperature easily, the GT4050 performs well in any glass situation. The GT4050 is capable of all glass firing techniques up to 1650F, including fusing slumping painting & casting. Standard equipped with Set-Pro controller. Inside dimensions are 19 3/4" w x 15 3/4" d x 6 1/2" d. 15 amps, 240v.

### OCTAGON KILN

Catalog # EH-GTS18-9

Catalog # EH-GTS18-9RM (With built-in Ramp Master)

Catalog # EH-GTS18-13RM (With built-in Ramp Master)



The GTS 18-9 was designed with the artist and small studio in mind. Its size lends itself well to the individual and is suited for all styles of hot glass work. Heating elements are configured in a top and side firing design for complete control of all kiln forming operations. Infinite control switches are standard. Inside dimensions are 17 1/2" wide x 9" or 13" deep. 27 amps and 240 or 208 volts please specify.

### TEN SIDED KILN

Catalog # EH-GTS23-9

Catalog # EH-GTS23-9RM (With built-in Ramp Master)

Catalog # EH-GTS23-13

Catalog # EH-GTS23-13RM (With built-in Ramp Master)



The GTS 23-9 is an absolute necessity for the busy artist, studio and production operation. Its size and versatility enable the user to explore all facets of hot glass work, from fusing and slumping to painting and pate de verre without restriction. Standard controls consists of infinite switches. All elements independently operated. Inside dimensions are 23 1/2" wide x 9" deep. 30 amps and 240 volts or 208 volts please specify. Also available 13' deep.

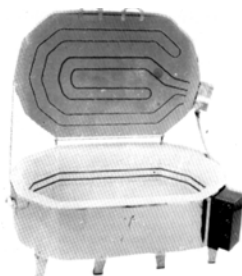
### WIDE TOP LOADING KILN

Catalog # EH-GTS2541

Catalog # EH-GTS2541RM (With built-in Ramp Master)

Catalog # EH-GTS2541-13

Catalog # EH-GTS2541-13RM (With built-in Ramp Master)



The largest of the top loading kilns, the GTS 2541 offers performance with increased size for the busy studio and production operation. Designed primarily for fusing and slumping, the GTS2541 can easily handle other glass techniques as well. Heating elements are configured in a top and side firing design with all elements being independently controlled. Inside dimensions are 41" wide x 25 1/2" long x 9" deep. 40 amps and 240 volts or 208 volts please specify. Also available 13" deep.

# EVENHEAT GLASS KILNS

## KILN PRICING FOB CASEVILLE, MI

### **STUDIO Pro 24 KILN**

*Catalog # EH-SP24RM*

### **STUDIO Pro 41 KILN**

*Catalog # EH-SP41RM*



Dual hinged design offers unlimited access to your art. Lid flips up for loading tall projects, venting or manipulating glass while inside the kiln, while the front loading option makes loading your kiln easy. Spring-assisted lift makes opening the lid or body of this kiln easy. Equipped with the swing-view mounted Rampmaster 3 controller featuring Express Mode, programming and firing your projects is so easy. The Studio Pro 24 has a chamber size of 24" x 24" x 13 1/2" and is 240v and 32amp. The Studio Pro 41 has a chamber size of 40 1/2" x 25 1/4" x 13 1/2" and is 240v, 45amp.

### **DYNOLIFT**

*Catalog # EH-DYNALIFT*

*(For EH-GTS2541 Models)*

*Catalog # EH-DYNALIFT-S*

*(For EH-GTS23 Models)*



The DYNO-LIFT spring loaded lid lifting device is designed for use with EH-GTS23-9, EH-GTS23-13, EH-GTS2541 & EH-GTS2541-13. Prevents lid from crashing closed and makes opening less of a struggle. Please specify which kiln you are ordering for.

The ramp master controller is available as a built-in option on most kilns in the Evenheat line. The ramp master is also available as a remote unit for new and existing kilns ( see "ramp master Wall Mount" below ). Ask for the ramp master digital control when choosing your next Evenheat kiln.

### **RAMPMASTER WALL MOUNT**

*Catalog # EH-WRM-1 ( 120v 20a )*

*Catalog # EH-WRM-2 ( 240v 20a )*

*Catalog # EH-WRM-3 ( 240v 30a )*

*Catalog # EH-WRM-5 ( 240v 50a )*

*Catalog # EH-WRM-6 ( 240v 60a )*

The Ramp Master wall mount controller converts manually operated kilns into fully programmable, automatic units. Simply plug the existing manual kiln into the controller, program and fire. All operations are handled automatically. The Ramp Master features 8 programmable segments, ascending and descending ramps temperature soaks pause and segment skip features and much more. The Ramp Master wall mount can be used on most kilns. Please provide plug / receptacle configuration when ordering.



### **Important Ordering Information**

When ordering your evenheat glass kiln please provide us with the following information.

U.S. and Canada

1. Operating voltage \*

All other countries

1. Country where kiln is to be used

2. Operating voltage \*

3. Operating line frequency

\* Standard production models are designed for use on 120V AC and 240V AC single phase. Other voltage and phase configurations are available at additional charge.

# KILN SHELVING

## KILN SHELVING

	Size	for Model
Catalog # EH-8.2	6" Square	EH-HB
Catalog # EH-7400	7 1/4" x 7 1/4"	EH-ST8or EH-SP or EH-SP-SP
Catalog # EH-7401	13" Square	EH-SP14RM
Catalog # EH-7404	8 1/2" x 7"	EH-JC
Catalog # EH-7407	12" Round	EH-GT14-6
Catalog # EH-7409	13 3/4" x 17 3/4"	EH-GT4050
Catalog # EH-7410	15 1/2" Octagon	EH-GTS18-9
Catalog # EH-7420	21" Round	EH-GTS23-9
Catalog # EH-7421	21" Half Round	EH-GTS2541
Catalog # EH-7435	16 1/2" x 11"	EH-GT17
Catalog # EH-7438	21" x 18" Half Oval	EH-GTS2541
Catalog # EH-7437	15" x 21"	EH-GTS2541
Catalog # EH-7439	21" x 38"	EH-GTS2541
Catalog # EH-7440	20" Square	EH-SP24RM
Catalog # EH-7441	21" x 38" Rectangle	EH-SP41RM & GTS2541

# KILN SHELF POSTS

## 1" TRIANGULAR SHELF POSTS

	Height
Catalog # EH-7000	1/2"
Catalog # EH-7001	1"
Catalog # EH-7002	2"
Catalog # EH-7003	3"
Catalog # EH-7004	4"
Catalog # EH-7005	5"
Catalog # EH-7006	6"



# KILN ACCESSORIES

## LID LIFTER

Catalog # EH-0158



Used for venting kilns safely. Useful for lifting the lid during the devitrification range. Hardwood handle. 12 1/2" overall length.

## PYROMETER

Catalog # EH-8060 Analog  
 Catalog # EH-8060D Digital



Indicates the temperature inside of the kiln. Enables you to know when to begin watching the glass closely and to make accurate firing records. Range is from 100°F to 2400°F + or - 1% of reading.

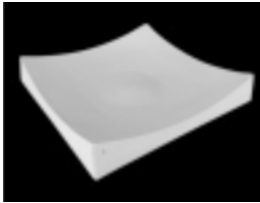
# BULLSEYE SLUMPING MOLDS

## SQUARE SLUMPERS / NO FLAT SPOT

- Catalog #B-8636 4 5/8" sq. x 1".
- Catalog #B-8635 8 7/8" sq. x 1 1/2".
- Catalog #B-8634 10 1/2" sq. x 2".
- Catalog #B-8637 12 1/4" sq. x 2 1/4".
- Catalog #B-8739 16" sq. x 3".
- Catalog #B-8938 21" sq. x 3 3/4".

## SQUARE SLUMPERS WITH FLAT BOTTOM

- Catalog #B-8995 7 1/4" sq. x 1 3/4".
- Catalog #B-8996 6 1/4" sq. x 1 1/4".
- Catalog #B-8997 5 3/8" sq. x 1 3/8".
- Catalog #B-8998 3 1/2" sq. x 3/4".



## RECTANGULAR SLUMPERS

- Catalog #B-8924 12 5/8" x 7 5/8" x 1 7/8".
- Catalog #B-8929 17 1/4" x 12 1/4" x 2 1/4".
- Catalog #B-8925 15 3/8" x 7 3/4" x 1 3/4".



B-8924

B-8929



B-8925

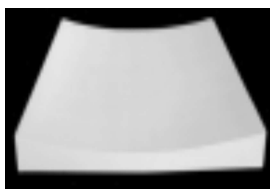
## ROUND SLUMPERS

- Catalog #B-8630 8 1/2" x 1 1/4".
- Catalog #B-8629 12 3/4" x 1 3/4".



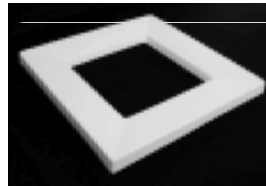
## VERY GENTLE CURVE

- Catalog #B-8982 18" sq. x 3/4".



## DROP OUT RINGS

- Catalog #B-8633 outer diameter 7 1/8 in.  
inner diameter 3 1/8 in.
- Catalog #B-8632 outer diameter 9 in.  
inner diameter 5 in.
- Catalog #B-8631 outer diameter 11 in.  
inner diameter 7 in.
- Catalog #B-8923 outer dimensions 16 1/8" x 9 1/4".  
inner dimensions 11" x 4 1/8".
- Catalog #B-8955 outer dimensions 18 1/8" x 11 1/8".  
inner dimensions 13 5/8" x 6 3/4".
- Catalog #B-8957 outer dimensions 10 1/8" sq.  
inner dimensions 5 5/8" sq.



B-8957



B-8923



B-8955



B-8633 B-8632 B-8631

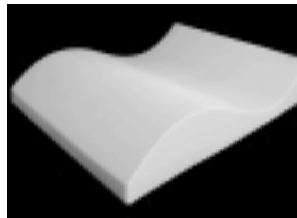
## SQUARE NESTING PLATES

- Catalog #B-8759 8.6" x 8.6" x 1".
- Catalog #B-8758 7" x 7" x .08".
- Catalog #B-8757 5.5" x 5.5" x .09".



## DOUBLE CURVE

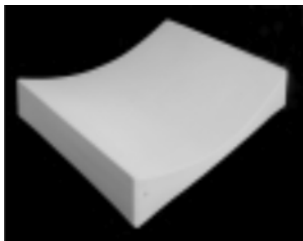
- Catalog #B-8643 14" x 16 3/8" x 3".
- Catalog #B-8960 9 3/4" x 8 1/4" x 1 3/4".



# BULLSEYE SLUMPING MOLDS

## SIMPLE CURVE

Catalog #B-8642 16 1/2" x 13 1/2" x 2".



## ROUND SOUP BOWL

Catalog #B-8665 9 3/4" x 1 3/4".



## BALL SURFACE

Catalog #B-8736 8" x 1 1/4".

Catalog #B-8735 10 1/8" x 2".

Catalog #B-8734 11 3/4" x 3 1/8".

Catalog #B-8733 14 7/8" x 2 1/2".

Catalog #B-8738 17" x 3 3/8".

Catalog #B-8737 20" x 3 7/8".

Catalog #B-8745 22" x 4 1/2".

Catalog #B-8746 5.8" x 1.7"



## ROUND BOWL #1

Catalog #B-8651 16" x 2 1/2".



## ROUND BOWL #2

Catalog #B-8652 16 3/8" x 3 5/8".



## ROUND BOWLS "CLASSIC"

Catalog #B-8748 6 1/4" x 1".

Catalog #B-8749 6 1/8" x 5/8".

Catalog #B-8747 8 3/4" x 7/8".

Catalog #B-8723 12 1/2" x 3".

Catalog #B-8724 16 1/4" x 3 1/2".



## ROUND PASTA BOWLS

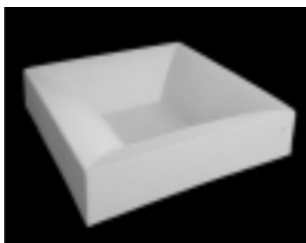
Catalog #B-8909 11 5/8" x 1 7/8"  
rim: 2".

Catalog #B-8910 13 1/2" x 2"  
rim: 2 3/8".



## SQUARE BOWL-SIMPLE CURVE

Catalog #B-8647 12 3/8" SQ. x 2 5/8".

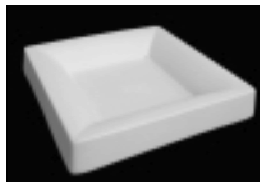


## SQUARE PLATE-SIMPLE CURVE

Catalog #B-8899 6 1/2" sq. x 1".

Catalog #B-8900 5 1/2" sq. x 1".

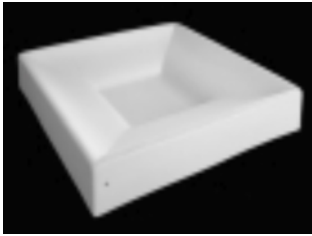
Catalog #B-8901 3 3/8" sq. x 5/8".



# BULLSEYE SLUMPING MOLDS

## SQUARE BOWL-DOUBLE CURVE

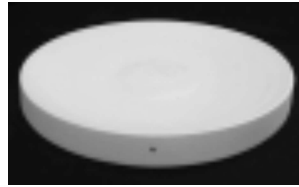
Catalog #B-8648 12 1/4" SQ. x 2 1/8".



## PLAIN PLATE

Catalog #B-8721 14 3/4" x 1 1/2".

Catalog #B-8722 18" x 2 1/4".



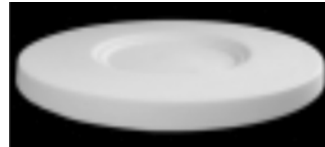
## ROUND RIMED PLATE

Catalog #B-8928 13 1/4" x 7/8".



## SATURN DINNER & DESERT PLATES

Catalog #B-8939 11 1/2" x 3/4"  
inside: 5".



## SEDAR PLATE

Catalog #B-8959 13"  
indentations: 2 3/4".



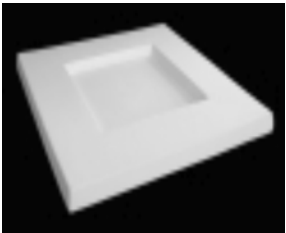
## SMALL DISH

Catalog #B-8926 8 3/4" sq. x 1 3/8".



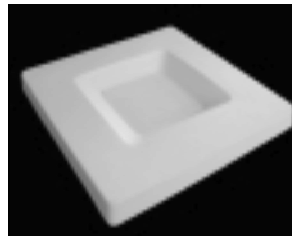
## SQUARE PLATTER

Catalog #B-8638 9 7/8" sq.  
inside: 5 1/8" sq. x 5/8".  
Catalog #B-8641 12 3/8" sq.  
inside: 6 1/4" sq. x 5/8".  
Catalog #B-8646 15" sq.  
inside: 7 7/8" sq. x 3/8".



## SOFT-EDGED SQUARE PLATTER

Catalog #B-8963 6.1" sq.  
inside: 3" sq.  
Catalog #B-8962 14 1/4" x 9 3/4".  
inside: 10 1/4" x 5 1/2" x 3/8".



## OVALS WITH ROUNDED BOTTOMS

Catalog #B-8951 18 3/4" x 6 7/8" x 1 1/4".  
Catalog #B-8920 11 1/4" x 4 3/4" x 5/8".



## OVALS WITH FLAT BOTTOMS

Catalog #B-8952 15 3/8" x 6 7/8" x 1 7/8".  
Catalog #B-8919 11 1/2" x 4 7/8" x 5/8".





# BULLSEYE SLUMPING MOLDS

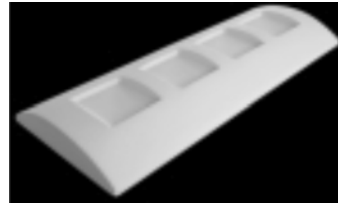
## ONE CANDLE BRIDGE

Catalog #B-8903 7 1/4" x 5 1/4" X 1 1/2".



## FOUR CANDLE BRIDGES

Catalog #B-8902 12 1/8" x 5 7/8" X 1 5/8".



## SOFT EDGE OVAL

Catalog #B-8744 15 3/4" x 9 3/4" x 1 3/4".



## CONIC LAMP BENDER

Catalog #B-8740 10 7/8" wide & 4" tall at top  
8 1/4" wide & 3" tall at bottom  
12 3/4" long.



## LAMP BENDER

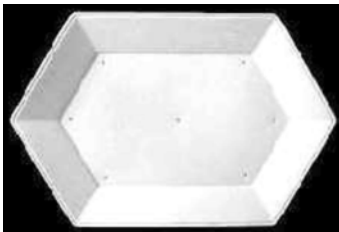
Catalog #B-8725 8 7/8" x 10 1/2" x 3 7/8".  
Catalog #B-8964 6 1/4" x 5" x 2 1/4".



# FUTURE FORMS SLUMPING MOLDS

## ELONGATED HEXAGON RIMMED PLATE

Catalog #M126 14" x 9 1/4" x 3/8"  
rim: 1 3/4".



## ROUND RIMMED PLATE

Catalog #M1002 11" x 7/8"  
rim: 1 1/2".  
Catalog #M778 6" x 3/8"  
rim: 1".



## ROUND PLATE

Catalog #M1004 8" x 5/8".



# FUTURE FORMS SLUMPING MOLDS

## ROUND BOWLS

Catalog #M678 7 1/2" x 1 1/2".

Catalog #M2008 12 1/2" x 3".



## DEEP ROUND BOWL

Catalog #M693 11" x 2 1/8".



## OVAL PLATTERS

Catalog #M544 6" x 8" x 1/2".

Catalog #M3003 11 1/2" x 6" x 1 1/2".

Catalog #M3004 19" x 13" x 2".



## LEAF PLATE

Catalog #M2160 15" x 10" x 1 3/4".



## CHRISTMAS TREE PLATE

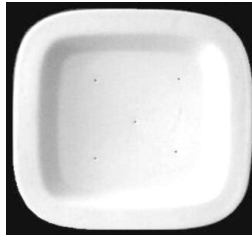
Catalog #M3541 7 1/2" x 8 3/4" x 1".



## RIMMED SQUARE BOWL w/ROUNDED CORNERS

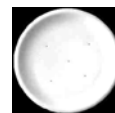
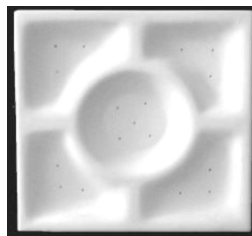
Catalog #M551 10 1/4" SQ. x 1"

rim: 1 1/8".



## 4 SECTION SERVING PLATTER w/DIP BOWL

Catalog #M3278 9 1/2" SQ. x 7/8".



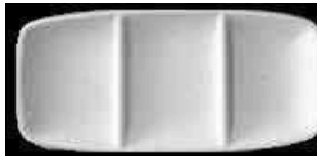
## ELOGATED TRAY w/HANDLES

Catalog #M431 14 1/2" x 7" x 1 1/4".



## 3 SECTION ELOGATED TRAY w/HANDLES

Catalog #M2186 9 7/8 x 5" x 1/2".



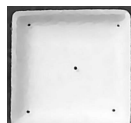
## SCALLOPED EDGE SUSHI TRAY

Catalog #M660 12 3/4" x 8 1/2" x 7/8".



## GINGER DISH

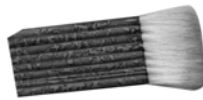
Catalog #M661 3 1/2"sq.



# FUSING SUPPLIES

## HAIK BRUSH

Catalog # FS7818



2 3/8" Wide brush used for applying smooth even coats of shelf primer to shelves or molds.

## SPECTRUM POPYROS SHELF PAPER

Catalog # S-FP 20 1/2" x 20 1/2"

Catalog # S-FP-82 20 1/2" X 82'

## BULLSEYE THIN FIRE SHELF PAPER

Catalog # B-8210 20 1/2" x 20 1/2"

Catalog # B-8211 41" X 250' (Sold by the roll or by the foot)

## 3/32" SHELF PAPER

Catalog # FS7822

## 1/8" SHELF PAPER

Catalog # FS7822B

24" x 24" Fiber shelf paper for use as a fusing surface not requiring the need for shelf primer. Withstands temperatures up to 2300°F.

## SHELF PRIMER #5 BUCKET

Catalog # B-8220 Gallon bucket



Shelf Primer prevents glass from sticking to most ceramic or metal surfaces and prevents cracking as glass cools.

## GLASTAC

Catalog # B-8234

Original Glastac 4oz Bottle

Catalog # B-8232

Original Glastac 32 oz. Bottle

Catalog # B-8268

Glastac Gel 4oz. Bottle

Catalog # B-8269

Glastac Gel 32 oz. Bottle



Lightly tacks glass pieces in place prior to firing. Slow drying and pliability allows for readjustments as you work. Water soluble.

## HOT LINE SPRAY A Plus

Catalog # FS782406 (16oz)

Lead Free Glass Overglaze. A low melting glass suspended in a spray medium. Apply to protect before firing in order to assure against devitrification.



## FUSEMASTER SUPER SPRAY

Catalog # FS7827 (8oz)

Catalog # FS7827Q (32oz)

Prevents surface devitrification on kiln glass projects.

\*Proven safe for food bearing surfaces.

\*Can be used on iridescent coat and dichroic surfaces

\*Will not discolor reds, oranges or other sensitive colors.



# FUSING SUPPLIES

## SHELF PRIMER

Catalog # FS7819 (24oz)

Used on kiln shelves to prevent glass from sticking when firing



## FIBERMOLD HARDNER

Catalog # FS7850Q (32oz)

Fiber Mold hardener can be used with all fiber products as a rigidizer; air or oven dry. The hardener and fiber products will not act as a glue, but gain surface strength after firing to 1300 deg. F.



# ADJUSTABLE DISPLAY STAND

Catalog # PS-1 **PROJECT STAND (Sold 1 per Package)**

Designed to hold square or rectangular shapes of any size. For smaller size pieces you can use only 1 as a stand alone display or for larger projects use 2 stands, one on either side. For use with fused glass pieces or traditional stained glass pieces.



# SCONCE MOLDS & HARDWARE

These Sconce molds and hardware make any lighting job a snap. Both hardware are UL approved and hardwired so that there is no cord dangling below the light fixture. The WSH-1 adjusts in width in case your finished piece doesn't quite match the hardware and allows you to use other molds. It fits standard bulbs as well as newer style fluorescent bulbs up to 75 watts. WSH-2 snaps onto the top and bottom edge of the glass piece and can fit any shape of glass that is made to the correct dimensions to fit. Due to the shallow depth between the bulb and the glass, this hardware is supplied with a candleabra style bulb receptical that will allow bulbs up to 75 watts.

## SCONCE MOLDS

Catalog # MWC40

9" x 8" (Fits Hardware WSH-1)

Catalog # MWC1012

10" x 12" (Fits Hardware WSH-2)

## SCONCE HARDWARE

Catalog # WSH-1

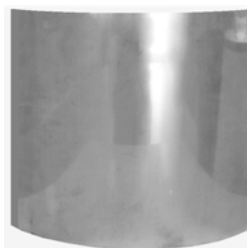
(Fits Mold MWC40)

Catalog # WSH-2

(fits Mold MWC1012)



MWC40



MWC1012



WSH-1



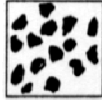
WSH-2

# BULLSEYE FRITS & POWDERS

Frits are made from crushed, screened and magnetically cleaned Tested Compatible sheets glass. They are only available as "F" (Tested Compatible). Frits are packaged in wide-mouth 5 lb or 1 lb jars. Franciscan Glass stocks 02 medium frit and 08 powder frit in 1lb jars, other sizes available special order only. 5lb jars are stocked in Clear Black and White only, in all sizes. All other 5lb jars are special order only. Frits are available in three grain sizes (shown actual size and powder) :



Fine:-01  
0.2mm - 1.2mm



Medium: -02  
1.2mm - 2.7mm



Coarse: -03  
2.7mm - 5.2mm

## FRITS: OPAL

\* Special Order Only!

Catalog Number	Colors - Description	Price Code						
		*Fine	*Medium	*Coarse	*Fine	Medium	*Coarse	Powder
		5 lb. Jar -01	5 lb. Jar -02	5 lb. Jar -03	1 lb. Jar -91	1 lb. Jar -92	1 lb. Jar -93	1 lb. Jar -98
B-0009	Reactive Cloud	DW	DW	DW	DJ	DJ	DJ	DQ
B-0024	Tomato Red	CW	CW	CW	CJ	CJ	CJ	CQ
B-0025	Tangerine Orange	CW	CW	CW	CJ	CJ	CJ	CQ
B-0034	Lt Peach Cream	CW	CW	CW	CJ	CJ	CJ	CQ
B-0100	Black	CW	CW	CW	CJ	CJ	CJ	CQ
B-0101	Stiff Black	CW	CW	CW	CJ	CJ	CJ	CQ
B-0108	Powder Blue	BW	BW	BW	BJ	BJ	BJ	BQ
B-0112	Mint Green	BW	BW	BW	BJ	BJ	BJ	BQ
B-0113	White	BW	BW	BW	BJ	BJ	BJ	BQ
B-0114	Cobalt Blue	BW	BW	BW	BJ	BJ	BJ	BQ
B-0116	Turquoise Blue	BW	BW	BW	BJ	BJ	BJ	BQ
B-0120	Canary Yellow	CW	CW	CW	CJ	CJ	CJ	CQ
B-0124	Red	CW	CW	CW	CJ	CJ	CJ	CQ
B-0125	Orange	CW	CW	CW	CJ	CJ	CJ	CQ
B-0126	Spring Green	CW	CW	CW	CJ	CJ	CJ	CQ
B-0132	Ivory	BW	BW	BW	BJ	BJ	BJ	BQ
B-0136	Deco Gray	BW	BW	BW	BJ	BJ	BJ	BQ
B-0137	French Vanilla	BW	BW	BW	BJ	BJ	BJ	BQ
B-0138	Marzipan Striker	DW	DW	DW	DJ	DJ	DJ	DQ
B-0141	Dark Forest Green	BW	BW	BW	BJ	BJ	BJ	BQ
B-0142	Neo-lavender	EW	EW	EW	EJ	EJ	EJ	EQ
B-0144	Teal Green	BW	BW	BW	BJ	BJ	BJ	BQ
B-0145	Jade Green	BW	BW	BW	BJ	BJ	BJ	BQ
B-0146	Steel Blue	BW	BW	BW	BJ	BJ	BJ	BQ
B-0147	Deep Cobalt Blue	CW	CW	CW	CJ	CJ	CJ	CQ
B-0164	Egyptian Blue	BW	BW	BW	BJ	BJ	BJ	BQ
B-0203	Woodland Brown	CW	CW	CW	CJ	CJ	CJ	CQ
B-0212	Olive Green	BW	BW	BW	BJ	BJ	BJ	BQ
B-0216	Light Cyan Blue Opal	BW	BW	BW	BJ	BJ	BJ	BQ
B-0220	Sunflower Yellow	CW	CW	CW	CJ	CJ	CJ	CQ
B-0224	Deep Red	CW	CW	CW	CJ	CJ	CJ	CQ
B-0225	Pimento Red	CW	CW	CW	CJ	CJ	CJ	CQ
B-0227	Golden Green Opal	CW	CW	CW	CJ	CJ	CJ	CQ
B-0243	Translucent White	CW	CW	CW	CJ	CJ	CJ	CQ
B-0301	Pink	FW	FW	FW	FJ	FJ	FJ	FQ
B-0303	Dusty Lilac	CW	CW	CW	CJ	CJ	CJ	CQ
B-0305	Salmon Pink	FW	FW	FW	FJ	FJ	FJ	FQ
B-0309	Cinnabar	DW	DW	DW	DJ	DJ	DJ	DQ
B-0320	Merigold Yellow	CW	CW	CW	CJ	CJ	CJ	CQ
B-0321	Pumpkin Orange	CW	CW	CW	CW	CW	CW	CQ
B-0334	Gold Purple	FW	FW	FW	FJ	FJ	FJ	FQ
B-0337	Butterscotch Opal	CW	CW	CW	CJ	CJ	CJ	CQ
B-0421	Petal Pink	EW	EW	EW	EJ	EJ	EJ	EQ
<b>FRITS: TRANSPARENT</b>								
B-1009	Reactive Ice	D/W	D/W	D/W	D/J	D/J	D/J	D/Q
B-1101	Clear	AW	AW	AW	AJ	AJ	AJ	AQ
B-1105	Deep Purple	BW	BW	BW	BJ	BJ	BJ	BQ
B-1107	Light Green	BW	BW	BW	BJ	BJ	BJ	BQ
B-1108	Marine Blue	BW	BW	BW	BJ	BJ	BJ	BQ

# BULLSEYE FRITS & POWDERS

FRITS: TRANSPARENT		5 lb SPECIAL ORDER			Price Code			
Catalog Number	Colors-Description	*Fine	*Medium	*Coarse	*Fine	Medium	*Coarse	Powder
		5 lb. Jar	5 lb. Jar	5 lb. Jar	1 lb. Jar	1 lb. Jar	1 lb. Jar	1 lb. Jar
		-01	-02	-03	-91	-92	-93	-98
B-1109	Dark Rose Brown	BW	BW	BW	BJ	BJ	BJ	BQ
B-1112	Aventurine Green	BW	BW	BW	BJ	BJ	BJ	BQ
B-1114	Deep Royal Blue	BW	BW	BW	BJ	BJ	BJ	BQ
B-1116	Turquoise Blue	BW	BW	BW	BJ	BJ	BJ	BQ
B-1118	Midnight Blue	BW	BW	BW	BJ	BJ	BJ	BQ
B-1119	Sienna	CW	CW	CW	CJ	CJ	CJ	CQ
B-1120	Canary Yellow	CW	CW	CW	CJ	CJ	CJ	CQ
B-1122	Red-orange	CW	CW	CW	CJ	CJ	CJ	CQ
B-1125	Orange	CW	CW	CW	CJ	CJ	CJ	CQ
B-1126	Chartreuse	CW	CW	CW	CJ	CJ	CJ	CQ
B-1128	Deep Royal Purple	BW	BW	BW	BJ	BJ	BJ	BQ
B-1129	Charcoal Grey	BW	BW	BW	BJ	BJ	BJ	BQ
B-1137	Medium Amber	BW	BW	BW	BJ	BJ	BJ	BQ
B-1141	Med Olive Green Cath	BW	BW	BW	BJ	BJ	BJ	BQ
B-1145	Kelly Green	BW	BW	BW	BJ	BJ	BJ	BQ
B-1215	Lt. Pink Striker	FW	FW	FW	FJ	FJ	FJ	FQ
B-1234	Violet Stiker	FW	FW	FW	FJ	FJ	FJ	FQ
B-1241	Pine Green	BW	BW	BW	BJ	BJ	BJ	BQ
B-1305	Sunset Coral	FW	FW	FW	FJ	FJ	FJ	FQ
B-1311	Cranberry Pink	M/P	M/P	M/P	M/P	M/P	M/P	M/P
B-1320	Marigold Yellow	CW	CW	CW	CJ	CJ	CJ	CQ
B-1321	Carnelian	FW	FW	FW	FJ	FJ	FJ	FQ
B-1322	Garnet Red	CW	CW	CW	CJ	CJ	CJ	CQ
B-1332	Fuchsia	M/P	M/P	M/P	M/P	M/P	M/P	M/P
B-1334	Gold Purple	M/P	M/P	M/P	M/P	M/P	M/P	M/P
B-1401	Crystal Clear	BW	BW	BW	BJ	BJ	BJ	BQ
B-1405	Light Plum	BW	BW	BW	BJ	BJ	BJ	BQ
B-1406	Light Steel Blue	BW	BW	BW	BJ	BJ	BJ	BQ
B-1408	Lt. Aquamarine Blue	BW	BW	BW	BJ	BJ	BJ	BQ
B-1409	Light Bronze	BW	BW	BW	BJ	BJ	BJ	BQ
B-1412	Lt. Aventurine Green	BW	BW	BW	BJ	BJ	BJ	BQ
B-1414	Light Sky Blue	BW	BW	BW	BJ	BJ	BJ	BQ
B-1416	Light Turquoise Blue	BW	BW	BW	BJ	BJ	BJ	BQ
B-1417	Emerald Green	BW	BW	BW	BJ	BJ	BJ	BQ
B-1426	Spring Green	CW	CW	CW	CJ	CJ	CJ	CQ
B-1428	Light Violet	BW	BW	BW	BJ	BJ	BJ	BQ
B-1429	Light Silver Grey	BW	BW	BW	BJ	BJ	BJ	BQ
B-1437	Light Amber	BW	BW	BW	BJ	BJ	BJ	BQ
B-1439	Khaki	BW	BW	BW	BJ	BJ	BJ	BQ
B-1442	Neo-Lavender	EW	EW	EW	EJ	EJ	EJ	EQ
B-1449	Oregon Gray	BW	BW	BW	BJ	BJ	BJ	BQ
B-1464	True Blue	BW	BW	BW	BJ	BJ	BJ	BQ
B-1806	Med Juniper Blue	BW	BW	BW	BJ	BJ	BJ	BQ
B-1807	Cross Green	BW	BW	BW	BJ	BJ	BJ	BQ
B-1808	Powder Aqua Blue	CW	CW	CW	CJ	CJ	CJ	CQ
B-1818	Indigo Tint	CW	CW	CW	CJ	CJ	CJ	CQ
B-1820	Pale Yellow	DW	DW	DW	DJ	DJ	DJ	DQ
B-1821	Med Erbium Pink	FW	FW	FW	FJ	FJ	FJ	FQ
B-1823	Burnt Scarlet Tint Stkr.	FW	FW	FW	FJ	FJ	FJ	FQ
B-1824	Ruby Red Tint Stkr.	FW	FW	FW	FJ	FJ	FJ	FQ
B-1826	Green Tea Tint	CW	CW	CW	CJ	CJ	CJ	CQ
B-1827	Light Amber Tint	CW	CW	CW	CJ	CJ	CJ	CQ
B-1829	Gray Tint	CW	CW	CW	CJ	CJ	CJ	CQ
B-1831	Ruby Pink Tint Stkr.	FW	FW	FW	FJ	FJ	FJ	FQ
B-1834	Med Frit Coral Orange	DW	DW	DW	DJ	DJ	DJ	DQ
B-1837	Medium Amber Tint	CW	CW	CW	CJ	CJ	CJ	CQ
B-1838	Dark Amber Tint	CW	CW	CW	CJ	CJ	CJ	CQ
B-1841	Med Spruce Green	BW	BW	BW	BJ	BJ	BJ	BQ
B-1842	Med. Neo Lavender	EW	EW	EW	EJ	EJ	EJ	EQ
B-1859	Med. Rhubarb Pink	FW	FW	FW	FJ	FJ	FJ	FQ
B-1864	Gray Blue Tint	CW	CW	CW	CJ	CJ	CJ	CQ
B-1867	Olive Smoke Tint	CW	CW	CW	CJ	CJ	CJ	CQ

# BULLSEYE CONFETTI

Confetti are paper-thin shards of blown glass. The color saturation and opalescence of these glasses is much greater than that of the sheet glass, but due to their extreme thinness they appear very light with an almost paper or film-like quality.

Confetti are designed for collage-like applications. Thin confetti when overlaid on other glasses are useful for shading, hazing, or other types of color blending.

Confetti are packaged in 4 oz jars.

**PRICE CODE M/P MEANS MARKET PRICE**

## CONFETTI: OPAL

Catalog Number	Colors-Description	Price Code
		4 oz. Jar
		-84
B-0100-84	Black	O
B-0113-84	White	O
B-0114-84	Cobalt Blue	O
B-0117-84	Leaf Green	O
B-0120-84	Canary Yellow	O
B-0124-84	Red	O
B-0125-84	Orange	O
B-0301-84	Pink	M/P
B-8419	Mixed	

## CONFETTI: TRANSPARENT

Catalog Number	Colors-Description	Price Code
		4 oz. Jar
		-84
B-1108-84	Marine Blue	O
B-1112-84	Aventurine Green	O
B-1128-84	Purple	O
B-1311-84	Pink	M/P
B-1412-84	Lt. Aventurine Grn.	O

# BULLSEYE STRINGERS & RODS

Stringers are threads of glass which have been pulled from remelted fusible bullseye sheet glass. As it is impractical to retest the threads after remelting, they are not labeled "Tested Compatible", but have had many years of success in fusing these stringers to tested compatible sheet glass.

In both 1mm and 2mm thickness, stringers are approximately 17 1/2" long and are packed in 3/4" diameter plastic tubes. There are approximately 140 1mm and 45 2mm stringers per tube. For 1mm stringers add (-07) to the end of the 4 digit color number and for 2mm add (-72). For rods add (-76).

## STRINGERS & RODS OPAL

Catalog Number	Colors Description	Price code		
		Stringer 1mm	Stringer 2mm	Rod 6mm
		-07	-72	-76
B-0013	Opaque White	S/T	S/T	RC
B-0024	Tomato Red	N/A	N/A	RC
B-0034	Light Peach Cream	N/A	N/A	RA
B-0100	Black	ST	ST	RB
B-0101	Stiff Black	N/A	N/A	RB
B-0108	Powder Blue	ST	ST	RA
B-0112	Mint Green	ST	ST	RA
B-0113	White	ST	ST	N/A
B-0114	Cobalt Blue	ST	ST	RA
B-0116	Turquoise Blue	ST	ST	RA
B-0117	Mineral Green	N/A	N/A	RB
B-0120	Canary Yellow	ST	ST	RB
B-0124	Red	ST	ST	RB
B-0125	Orange	ST	ST	RB
B-0126	Spring Green	ST	ST	RB
B-0127	Nougat	N/A	N/A	RC

# BULLSEYE STRINGERS & RODS

## STRINGERS & RODS OPAL

Catalog Number	Colors Description	Price code		
		Stringer 1mm	Stringer Rod 2mm	6mm
		-07	-72	-76
B-0014	Cobalt Blue	N/A	N/A	RC
B-0016	Turquoise	N/A	N/A	RC
B-0017	Mineral Green	N/A	N/A	RC
B-0018	Periwinkle	N/A	N/A	RC
B-0046	Bluestone	N/A	N/A	RC
B-0064	Sterling Blue	N/A	N/A	RC
B-0132	Driftwood Gray	N/A	N/A	RA
B-0136	Deco Gray	ST	ST	RA
B-0137	French Vanilla	ST	ST	RA
B-0141	Dark Forest Green	ST	ST	RA
B-0142	Neo-Lavender	ST	ST	RC
B-0144	Teal Green	ST	ST	RB
B-0145	Jade Green	ST	ST	RB
B-0146	Steel Blue	N/A	N/A	RB
B-0147	Deep Cobalt Blue	ST	ST	RB
B-0164	Egyptian Blue	ST	ST	RA
B-0203	Woodland Brown	N/A	N/A	RB
B-0212	Olive Green	ST	ST	RB
B-0216	Light Cyan (turquoise)	N/A	N/A	RB
B-0217	Green Gold	ST	ST	N/A
B-0220	Sunflower Yellow	ST	ST	RB
B-0227	Golden Green	N/A	N/A	RC
B-0243	Translucent White	N/A	N/A	RB
B-0301	Pink	ST	ST	RD
B-0303	Dusty Lilac	N/A	N/A	RC
B-0305	Salmon Pink	N/A	N/A	RC
B-0309	Cinabar	N/A	N/A	RC
B-0312	Pea Pod	N/A	N/A	RB
B-0313	Dence White	N/A	N/A	RB
B-0321	Pumpkin Orange	ST	ST	RB
B-0329	Burnt Orange	S/T	S/T	RC
B-0334	Gold Purple	ST	ST	RD
B-0337	Butterscotch	S/T	S/T	RC
B-0421	Petal Pink	S/T	S/T	RD
B-0459	Rhubarb Pastel	N/A	N/A	RD

## STRINGERS & RODS TRANSPARENT

B-1022	Red-Orange	N/A	N/A	RC
B-1101	Clear	ST	ST	RA
B-1105	Deep Plum	N/A	N/A	RA
B-1107	Light Green	ST	ST	RA
B-1108	Aquamarine Blue	ST	ST	RA
B-1109	Dark Rose Brown	ST	ST	RA
B-1112	Aventurine Green	ST	ST	RC
B-1114	Deep Royal Blue	ST	ST	RA
B-1116	Turquoise Blue	ST	ST	RA
B-1118	Midnight Blue	ST	ST	RA
B-1119	Sienna	N/A	N/A	RC
B-1120	Yellow	N/A	N/A	RC
B-1122	Red	N/A	N/A	RC
B-1125	Orange	N/A	N/A	RC
B-1126	Chartreuse	N/A	N/A	RA



# BULLSEYE STRINGERS & RODS

## STRINGERS & RODS TRANSPARENT

Catalog Number	Colors Description	Price code		
		Stringer 1mm	Stringer 2mm	Rod 6mm
		-07	-72	-76
B-1128	Deep Royal Purple	ST	ST	RA
B-1129	Charcoal Gray	ST	ST	RA
B-1137	Medium Amber	ST	ST	RA
B-1141	Olive Green	ST	ST	RA
B-1145	Kelly Green	ST	ST	RA
B-1164	Caribbean Blue	N/A	N/A	RA
B-1215	Light Pink Striker	N/A	N/A	RD
B-1232	Light Fuchsia	N/A	N/A	RD
B-1234	Violet Striker	N/A	N/A	RD
B-1305	Sunset Coral	ST	ST	RD
B-1311	Cranberry Pink	M/P	M/P	RG
B-1322	Garnet Red	N/A	N/A	RC
B-1334	Gold Purple	M/P	M/P	RG
B-1342	Cranberry Sapphirine	M/P	M/P	RG
B-1401	Crystal Clear	N/A	N/A	RA
B-1405	Light Plum	N/A	N/A	RA
B-1406	Steel Blue	ST	ST	RA
B-1408	Light Aquamarine Blue	ST	ST	RA
B-1409	Light Bronze	ST	ST	RA
B-1412	Light Aventurine Green	ST	ST	RC
B-1414	Light Sky Blue	ST	ST	RA
B-1417	Emerald Green	ST	ST	RA
B-1426	Spring Green	ST	ST	RA
B-1428	Light Violet	N/A	N/A	RA
B-1429	Light Silver Gray	ST	ST	RA
B-1437	Light Amber	N/A	N/A	RA
B-1439	Khaki	N/A	N/A	RA
B-1442	Neo-Lavender	ST	ST	RC
B-1506	Pale Steel Blue	N/A	N/A	RA
B-1514	Pale Sky Blue	N/A	N/A	RA
B-1517	Pale Emerald	N/A	N/A	RA
B-1528	Pale Amethyst	N/A	N/A	RA
B-1701	Amber Luster	N/A	N/A	RL
B-1707	Green Luster	N/A	N/A	RL
B-1714	Blue Luster	N/A	N/A	RL
B-1717	Copper Green Luster	N/A	N/A	RL
B-1806	Juniper Blue	N/A	N/A	RA
B-1807	Grass Green Tint	ST	ST	RA
B-1808	Aqua Blue Tint	ST	ST	RB
B-1812	Seaweed Aventurine	N/A	N/A	RC
B-1820	Pale Yellow Tint	ST	ST	RC
B-1821	Erbium Pink	ST	ST	RD
B-1834	Coral Orange Tint	ST	ST	RC
B-1841	Spruce Green Tint	ST	ST	RA
B-1842	Light Neo-Lavender Tint	ST	ST	RC
B-1859	Rhubarb Pink/Green Shift Tint	ST	ST	RD
B-2010	Clear and Pink Opal Streaky	N/A	N/A	RD
B-2020	Clear and Sunflower Yellow Strky	N/A	N/A	RC
B-2050	Clear and Salmon Opal Streaky	N/A	N/A	RD

PRICE CODE M/P MEANS MARKET PRICE

# SYSTEM 96 FRITS & POWDERS

Frits are made from crushed, screened and magnetically cleaned Tested Compatible sheets glass. Frits are packaged in 8.5 oz. plastic jars. 4 lb jar are available special order only, call for pricing on 4 lb jars.

## SOLID OPAL FRITS & POWDERS COE 96

Catalog Number	Colors - Description	Price Code			
		Pwdr	Fine	Med	Crse
		8.5oz. Jar	8.5oz. Jar	8.5oz. Jar	8.5oz. Jar
		F1	F2	F3	F5
U-045	Red Reactive Opal	RQ	RJ	RJ	RJ
U-078	Paynes Gray	RQ	RJ	RJ	RJ
U-079	Chambray	RQ	RJ	RJ	RJ
U-200	White	RQ	RJ	RJ	RJ
U-209	Firelight I	RQ	RJ	RJ	RJ
U-355	Marigold	RQ	RJ	RJ	RJ
U-56	Black	RQ	RJ	R	RJ
U-56I	Black Iridescent			TJ	TJ
U-568	Aventurine Black	SQ	SJ	SJ	SJ
U-602	Flame	RQ	RJ	RJ	RJ
U-726	Apple Jade	RQ	RJ	RJ	RJ
U-755	Fern Green	RQ	RJ	RJ	RJ
U-782	Olive Green	RQ	RJ	RJ	RJ
U-2101	Ivory	RQ	RJ	RJ	RJ
U-2107	Almond	RQ	RJ	RJ	RJ
U-2103	Vannila Cream	RQ	RJ	RJ	RJ
U-2114	Chestnut	RQ	RJ	RJ	RJ
U-2152	Terra Cotta	RQ	RJ	RJ	RJ
U-2206	Dark Green	RQ	RJ	RJ	RJ
U-2222	Pastel Green	RQ	RJ	RJ	RJ
U-2232	Turquoise Green	RQ	RJ	RJ	RJ
U-2234	Peacock	RQ	RJ	RJ	RJ
U-2262	Lemongrass Green	RQ	RJ	RJ	RJ
U-2264	Amazon Green	RQ	RJ	RJ	RJ
U-2282	Celadon	RQ	RJ	RJ	RJ
U-2301	Hydrangea	RQ	RJ	RJ	RJ
U-2302	Medium Blue	RQ	RJ	RJ	RJ
U-2306	Cobalt Blue	RQ	RJ	RJ	RJ
U-2334	Turquoise Blue	RQ	RJ	RJ	RJ
U-2335	Mariner Blue	RQ	RJ	RJ	RJ
U-2404	Lilac	RQ	RJ	RJ	RJ
U-2502	Red	RQ	RJ	RJ	RJ
U-2602	Yellow	RQ	RJ	RJ	RJ
U-2672	Sunflower	RQ	RJ	RJ	RJ
U-2702	Orange	RQ	RJ	RJ	RJ
U-2711	Persimmon	RQ	RJ	RJ	RJ
U-2802	Pewter Gray	RQ	RJ	RJ	RJ
U-2806	Charcoal Gray	RQ	RJ	RJ	RJ
U-2911	Champagne	RQ	RJ	RJ	RJ

# SYSTEM 96 FRITS & POWDERS

## TRANSPARENT FRITS & POWDERS COE 96

Catalog Number	Colors - Description	Price Code			
		Pwdr 8.5oz. Jar	Fine 8.5oz. Jar	Med 8.5oz. Jar	Crse 8.5oz. Jar
		F1	F2	F3	F5
U-003	Red Reactive Trans	RQ	RJ	RJ	RJ
U-00	Clear	PQ	PJ	PJ	PJ
U-00I	Clear Iridescent	RQ	RJ	RJ	RJ
U-00MIR	Clear Metallic	RQ	RJ	RJ	RJ
U-01	Water Clear	RQ	RJ	RJ	RJ
U-111	Dark Amber	RQ	RJ	RJ	RJ
U-121	Lite Green	RQ	RJ	RJ	RJ
U-125	Dark Green	RQ	RJ	RJ	RJ
U-128	Aventurine Green	SQ	SJ	SJ	SJ
U-132	Light Blue	RQ	RJ	RJ	RJ
U-136	Dark Blue	RQ	RJ	RJ	RJ
U-138	Aventurine Blue	SQ	SJ	SJ	SJ
U-142	Lite Purple	RQ	RJ	RJ	RJ
U-151	Cherry Red	SQ	SJ	SJ	SJ
U-161	Yellow	SQ	SJ	SJ	SJ
U-171	Light Orange	SQ	SJ	SJ	SJ
U-1102	Pale Amber	RQ	RJ	RJ	RJ
U-1108	Med. Amber	RQ	RJ	RJ	RJ
U-1308	Pale Blue	RQ	RJ	RJ	RJ
U-1408	Pale Purple	RQ	RJ	RJ	RJ
U-1808	Pale Gray	RQ	RJ	RJ	RJ
U-2382	Alpine Blue	RQ	RJ	RJ	RJ
U-5181	Bronze	RQ	RJ	RJ	RJ
U-5232	Teal Green	RQ	RJ	RJ	RJ
U-5238	Hunter Green	RQ	RJ	RJ	RJ
U-5262	Moss Green	RQ	RJ	RJ	RJ
U-5281	Sea Green	RQ	RJ	RJ	RJ
U-5284	Olive Green	RQ	RJ	RJ	RJ
U-5331	Sky Blue	RQ	RJ	RJ	RJ
U-5332	Topaz Blue	RQ	RJ	RJ	RJ
U-5333	Deep Aqua	RQ	RJ	RJ	RJ
U-5342	Violet	RQ	RJ	RJ	RJ
U-5386	Navy Blue	RQ	RJ	RJ	RJ
U-5432	Grape	RQ	RJ	RJ	RJ
U-5911	Pink Champagne	RQ	RJ	RJ	RJ
U-7312	Lime Green	RQ	RJ	RJ	RJ

# SYSTEM 96 NOODLES/STRINGERS

Think fettuccini and spaghetti and you will have a good idea of the size and shape of these products. You can bend them with a candle, stack them or overlap them. Use them in the Murrini maker to create interesting pattern Murrinis in your kiln. They are 17" long and are packaged in 5 oz. plastic tubes.

## SOLID OPAL NOODLES 96 COE

CATALOG NUMBER	COLORS-DESCRIPTION	PRICE CODE
OC-N045	Red Reactive Opal	ST
OC-N078	Payne's Gray Opal	ST
OC-N200	White Opal	ST
OC-N355	Marigold Opal	ST
OC-N56	Black Opal	ST
OC-N602	Flame Opal	ST
OC-N755	Fern Green Opal	ST
OC-N782	Olive Green Opal	ST
OC-N2107	Almond Opal	ST
OC-N2116	Chocolate Opal	ST
OC-N2206	Dark Green Opal	ST
OC-N2222	Pastel Green Opal	ST
OC-N2262	Lemongrass Opal	ST
OC-N2264	Amazon Green Opal	ST
OC-N2302	Medium Blue Opal	ST
OC-N2306	Cobalt Blue Opal	ST
OC-N2334	Turquoise Blue Opal	ST
OC-N2402	Mauve Opal	ST
OC-N2502	Red Opal	ST
OC-N2602	Yellow Opal	ST
OC-N2702	Orange Opal	ST
OC-N2806	Charcoal Opal	ST
OC-N726	Apple Jade Opal	ST
OC-NMIX	Mardi Gras Opal	ST
OC-NBLUE-MIX	Blue Mixture	ST
OC-NGRN-MIX	Green Mixture	ST
OC-NWRM-MIX	Warm Color Mixture	ST
<b>TRANSPARENT NOODLES 96 COE</b>		
OC-N003	Red Reactive	ST
OC-N00	Clear	ST
OC-N1108	Medium Amber	ST
OC-N111	Dark Amber	ST
OC-N125	Dark Green	ST
OC-N136	Dark Blue	ST
OC-N151	Cherry Red	ST
OC-N161	Yellow	ST
OC-N171	Orange	ST
OC-N5232	Teal Green	ST
OC-N5262	Moss Green	ST
OC-N5281	Sea Green	ST
OC-N5284	Olive Green	ST
OC-N5333	Deep Aqua	ST
OC-N5432	Grape	ST

## SOLID OPAL STRINGERS 96 COE

CATALOG NUMBER	COLORS-DESCRIPTION	PRICE CODE
OC-S045	Red Reactive Opal	ST
OC-S078	Payne's Grau Opal	ST
OC-S200	White	ST
OC-S355	Marigold Opal	ST
OC-S56	Black	ST
OC-S602	Flame Opal	ST
OC-S755	Fern Green Opal	ST
OC-S782	Olive Green Opal	ST
OC-S2107	Almond Opal	ST
OC-S2116	Chocolate Opal	ST
OC-S2206	Dark Green Opal	ST
OC-S2222	Pastel Green	ST
OC-S2262	Lemongrass Opal	ST
OC-S2264	Amazon Green Opal	ST
OC-S2302	Medium Green Opal	ST
OC-S2306	Cobalt Blue Opal	ST
OC-S2334	Turquoise Blue Opal	ST
OC-S2402	Mauve Opal	ST
OC-S2502	Red Opal	ST
OC-S2602	Yellow Opal	ST
OC-S2702	Orange Opal	ST
OC-S2806	Charcoal Opal	ST
OC-S726	Apple Jade Opal	ST
OC-SMIX	Mardi Gras Opal	ST
OC-SBLUE-MIX	Blue Mixture	ST
OC-SGRN-MIX	Green Mixture	ST
OC-SWRM-MIX	Warm Color Mixture	ST
<b>TRANSPARENT STRINGERS 96 COE</b>		
OC-S003	Red Reactive	ST
OC-S00	Clear	ST
OC-S1108	Medium Amber	ST
OC-S111	Dark Amber	ST
OC-S125	Dark Green	ST
OC-S136	Dark Blue	ST
OC-S151	Cherry Red	ST
OC-S161	Yellow	ST
OC-S171	Orange	ST
OC-S5232	Teal Green	ST
OC-S5262	Moss Green	ST
OC-S5281	Sea Green	ST
OC-S5284	Olive Green	ST
OC-S5333	Deep Aqua	ST
OC-S5432	Grape	ST

# SYSTEM 96 RODS

System 96 glass rods are pencil thick (5.5cm) dowels measuring 19 1/2' long. They are great for torch work, blowing, fusing and casting. They are sold by the piece.

RODS 96 COE OPALS		
CATALOG NUMBER	COLORS-DESCRIPTION	PRICE CODE
U-RO-045-96	Red Reactive Opal	RC
U-RO-56-96	Black Opal	RB
U-RO-200-96	White Opal	RB
U-RO-355-96	Marigold Opal	RC
U-RO-602-96	Flame Opal	RC
U-RO-622-96	Forrest Green Opal	RC
U-RO-755-96	Fern Green Opal	RC
U-RO-782-96	Olive Green Opal	RC
U-RO-2103-96	Vanilla Cream Opal	RC
U-RO-2107-96	Almond Opal	RC
U-RO-2206-96	Dark Green Opal	RC
U-RO-2222-96	Pastel Green Opal	RC
U-RO-2232-96	Turquoise Green Opal	RC
U-RO-2234-96	Peacock Green Opal	RC
U-RO-2264-96	Amazon Green Opal	RC
U-RO-2302-96	Medium Blue Opal	RC
U-RO-2306-96	Cobalt Blue Opal	RC
U-RO-2334-96	Turquoise Blue Opal	RC
U-RO-2404-96	Lilac Opal	RC
U-RO-2502-96	Red Opal	RC
U-RO-2672-96	Sunflower Opal	RC
U-RO-2702-96	Orange Opal	RC
U-RO-2802-96	Charcoal Opal	RC
U-RO-2911-96	Champagne Opal	RC
U-RO-8261-96	Key Lime Opal	RC

RODS 96 COE TRANSPARENTS		
CATALOG NUMBER	COLORS-DESCRIPTION	PRICE CODE
U-RT-00-96	Clear	RA
U-RT-003-96	Red Reactive Transparent	RC
U-RT-111-96	Dark Amber	RB
U-RT-121-96	Light Green	RB
U-RT-125-96	Dark Green	RB
U-RT-136-96	Dark Blue	RB
U-RT-142-96	Light Purple	RB
U-RT-151-96	Red	RC
U-RT-161-96	Yellow	RC
U-RT-171-96	Orange	RC
U-RT-1102-96	Pale Amber	RB
U-RT-1108-96	Medium Amber	RB
U-RT-1308-96	Pale Blue	RB
U-RT-1808-96	Pale Gray	RB
U-RT-5181-96	Bronze	RB
U-RT-5232-96	Teal Green	RB
U-RT-5262-96	Moss Green	RB
U-RT-5281-96	Sea Green	RB
U-RT-5331-96	Sky Blue	RB
U-RT-5333-96	Deep Aqua	RB
U-RT-5432-96	Grape	RB
U-RT-5911-96	Pink Champagne	RB

# DICHROIC SIZZLESTIX & STRINGERS

Bullseye sizzle stix are 16' long strips of dichroic glass cut from 2mm thin Bullseye compatible clear and black glass, pre-fired to round edges and minimize thermal shock in the flame. Wide sizzle stix are 1/4" wide and sold by the piece or in tubes of 12 pieces. Narrow sizzle stix are 1/8" wide and sold by the piece or in tubes of 18 pieces.

## SIZZLESTICKS-MIXED COLOR TUBES

STYLE NUMBER	COLORS-DESCRIPTION	PRICE CODE
B-0100-09-30F	Thin Black 3mm	SS3
B-0100-09-60F	Wide Black 6mm	SS6
B-1101-09-30F	Thin Clear 3mm	SS3
B-1101-09-60F	Wide Clear 6mm	SS6

## SIZZLESTICKS-RAINBOW TUBES

STYLE NUMBER	COLORS-DESCRIPTION	PRICE CODE
B-0100-71-30F	Thin Black 3mm	SS3
B-0100-71-60F	Wide Black 6mm	SS6
B-1101-71-30F	Thin Clear 3mm	SS3
B-1101-71-60F	Wide Clear 6mm	SS6

Dichroic stringers with rainbow coating are 17 1/2" long, available coated on clear or black, 1mm or 2mm wide. There are 20 pieces per tube of 1mm stringers and 7 pieces per tube of 2mm stringer. Stringers are also sold individually at a premium price.

Uroboros noodle with rainbow coating are 16 1/2" long, 5mm wide, and available coated on clear or black. There are 12 pieces per tube. Noodles are also sold individually at a premium price.

## DICHROIC STRINGERS (RAINBOW)

CATALOG NUMBER	DESCRIPTION
CBS-BCS-RB	1mm Clear Stringer
CBS-BBS-RB	1mm Black Stringer
CBS-BCS2-RB	2mm Clear Stringer
CBS-BBS2-RB	2mm Black Stringer

## DICHROIC NOODLES 96 COE AND 96

CATALOG NUMBER	COLORS DESCRIPTION	PRICE CODE
U-00NFD	Clear Noodles COE 90	ND
U-56NFD	Black Noodles COE 90	ND
U-N00D	Clear Noodles COE 96	ND
U-N56D	Black Noodles COE 96	ND

# DICHROIC SCRAP PACKS

## SCRAP PACKS BY CBS,-ALL ARE COATED ON THIN SMOOTH BLACK or CLEAR GLASS

CATALOG NUMBER	DESCRIPTION
CBS-SPC90	1/2 lb Bag Clear COE 90B
CBS-SPB90	1/2 lb Bag Black COE 90
CBS-SPC96	1/2 lb Bag Clear COE 96
CBS-SPB96	1/2 lb Bag Black COE 96

## SCRAP PACKS BY AUSTIN THIN FILMS ARE COATED ON A VARIETY OF TEXTURED GLASSES, CLEAR or BLACK.

CATALOG NUMBER	DESCRIPTION
ATF-SPC90	1/2 lb Bag Clear COE 90B
ATF-SPB90	1/2 lb Bag Black COE 90
ATF-SPC96	1/2 lb Bag Clear COE 96
ATF-SPB96	1/2 lb Bag Black COE 96

# AUSTIN THIN FILMS DichroMagic®

Sold by the sheet, or by the half sheet this glass measures 16" x 16" with no cut corners. There is no transmitted color on black. All are available on COE90, or COE96 Please specify when ordering. Also specify catalog number with a dash and a color code added to the end of it. Example "ATF-UTC-LY"

		Reflects Off																		
		Violet	Blue	Med. Blue	Lt. Blue	Teal	Green	Yellow	Gold	Copper	Rainbow	Pink	Lt. Pink	Cyan	Lt. Cyan	Magenta	Red	Light Pink	Silver	
		Clear Transmits Thru																		
		Light Yellow	Yellow	Amber	Pink	Magenta	Violet	Blue	Light Blue	Cyan	Rainbow	Green	Teal	Orange	Red	Yellow-Green	Clear	Turquoise	Light Rust	
Color Code		LY	YE	AM	PI	MA	VI	BL	LB	CY	RB	GR	TE	OR	RE	MR	RR	TQ	S	
Catalog Number	Colors - Description	Price Code																		
<b>UROBOROS CLEAR 90.0 C.O.E.</b>																				
ATF-UTC	Uroboros Thin Clear	C	C	C	C	C	C	C	C	C	C	P	P	P	P	P	P	P	P	S
ATF-UCR	Uroboros Clear Ripple	C	C	C	C	C	C	C	C	C	C	P	P	P	P	P	P	P	P	S
ATF-UCF	Uroboros Clear Fibroid	C	C	C	C	C	C	C	C	C	C	P	P	P	P	P	P	P	P	S
ATF-UCG	Uroboros Clear Granite	C	C	C	C	C	C	C	C	C	C	P	P	P	P	P	P	P	P	S
ATF-UCRA	Uroboros Clear Radium	C	C	C	C	C	C	C	C	C	C	P	P	P	P	P	P	P	P	S
<b>UROBOROS BLACK 90.0 C.O.E.</b>																				
ATF-UTB	Uroboros Thin Black	C	C	C	C	C	C	C	C	C	C	P	P	P	P	P	P	P	P	S
ATF-UBR	Uroboros Black Ripple	C	C	C	C	C	C	C	C	C	C	P	P	P	P	P	P	P	P	S
ATF-UBF	Uroboros Black Fibroid	C	C	C	C	C	C	C	C	C	C	P	P	P	P	P	P	P	P	S
ATF-UBG	Uroboros Black Granite	C	C	C	C	C	C	C	C	C	C	P	P	P	P	P	P	P	P	S
ATF-UBRA	Uroboros Black Radium	C	C	C	C	C	C	C	C	C	C	P	P	P	P	P	P	P	P	S

**Catalog # ATF-MB**

**DichroMagic® MAGIC BOX SAMPLER**

Contains 8 Black and 8 Clear 2" x 4". Assorted colors and textures. COE 90

**Catalog # ATF-MB96**

**DichroMagic® MAGIC BOX SAMPLER**

Contains 5 Black and 5 Clear 2" x 4". Assorted colors and textures. COE 96

**Catalog # ATF-SAM**

**Catalog # ATF-SAMC96 Clear Only**

**Catalog # ATF-SAMB96 Black Only**

**DichroMagic® SAMPLE KIT**

COE 90 box has 32 pcs. 1 of each color 1 1/2" x 1 1/2" on black and clear. The COE 96 boxes have 16 pcs. 1 1/2"x3" on clear or black.

Also available from Austin Thin Films are Dichroic strips measuring 2 1/2" x 8". Each piece is labeled with color code as well as compatibility. We stock a wide range of colors and textures on both COE 90 & 96, black and clear. When ordering please specify black or clear, type of texture, color coating & COE.

**Catalog # ATF-2.5x8C90**

Standard color/Clear/COE90

**Catalog # ATF-2.5x8CP90**

Premium color/Clear/COE90

**Catalog # ATF-2.5x8CDP90**

Dbl.Premium color/Clear/COE90

**Catalog # ATF-2.5x8B90**

Standard color/Black/COE90

**Catalog # ATF-2.5x8BP90**

Premium color/Black/COE90

**Catalog # ATF-2.5x8BDP90**

Dbl.Premium color/Black/COE90

**Catalog # ATF-2.5x8C96**

Standard color/Clear/COE96

**Catalog # ATF-2.5x8CP96**

Premium color/Clear/COE96

**Catalog # ATF-2.5x8CDP96**

Dbl.Premium color/Clear/COE96

**Catalog # ATF-2.5x8B96**

Standard color/Black/COE96

**Catalog # ATF-2.5x8BP96**

Premium color/Black/COE96

**Catalog # ATF-2.5x8BDP96**

Dbl.Premium color/Black/COE96

